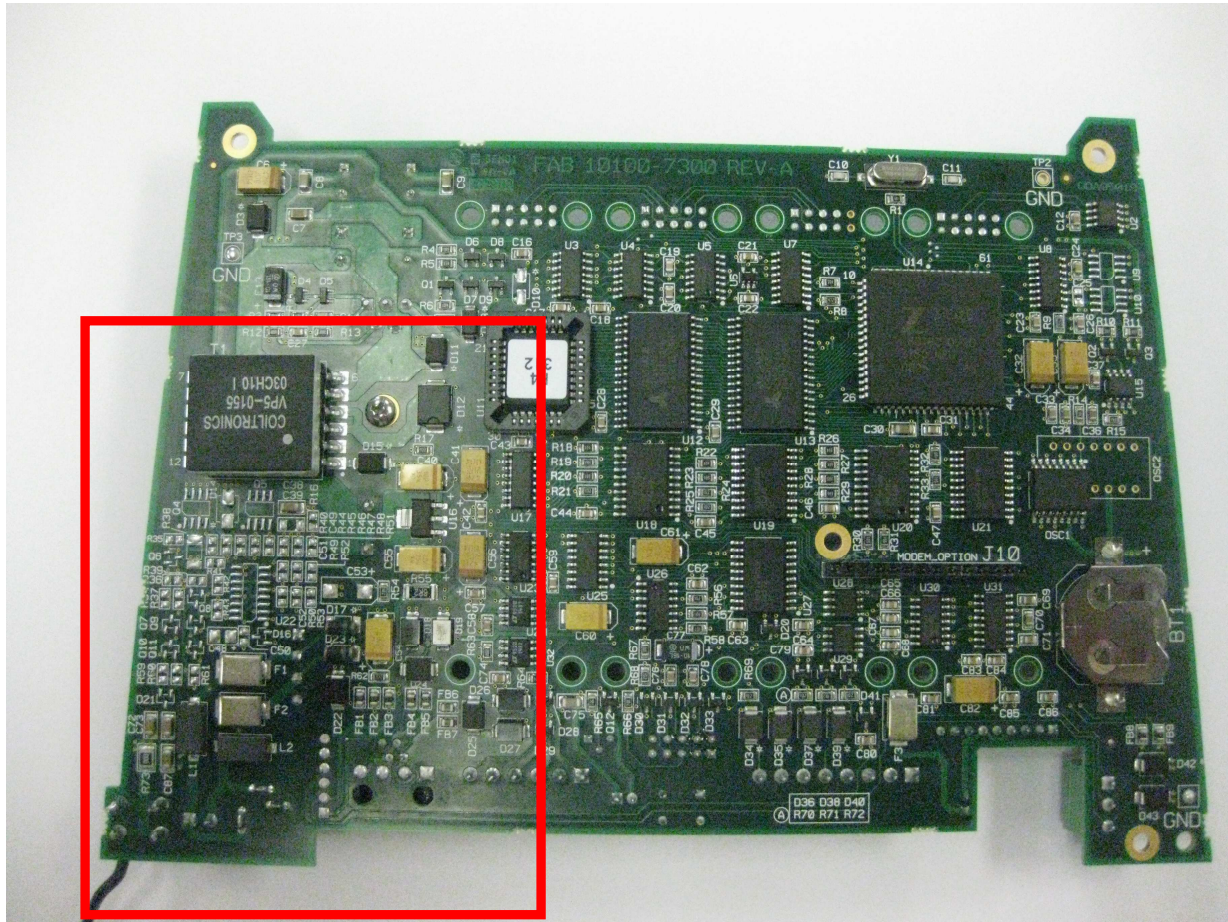


How to tell if main board has Battery Backup Circuitry:

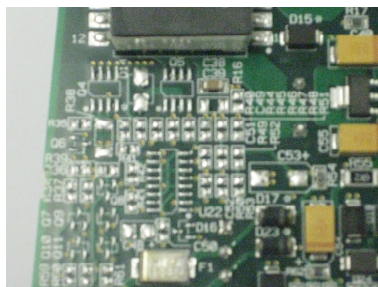
First remove the board carefully, and flip it over (see picture below)



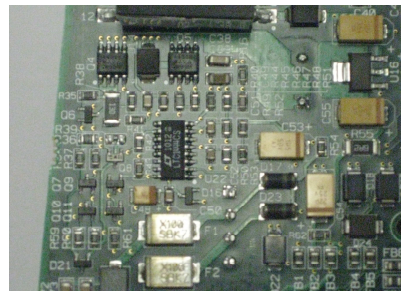
Look at the area outlined by the red box.

If it resembles Picture 1, it does NOT have battery back up circuitry and will require a new main board for the upgrade.

If it resembles Picture 2, it DOES have battery backup circuitry and will not require a new main board, just the battery



Picture 1:
Without Battery Backup Circuitry



Picture 2:
With Battery Backup Circuitry