

CS-Series

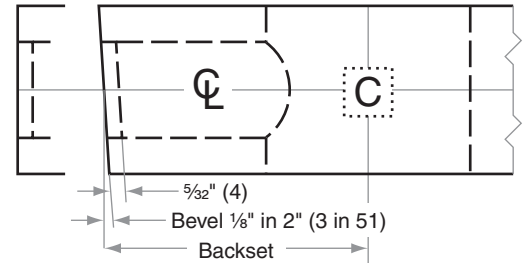
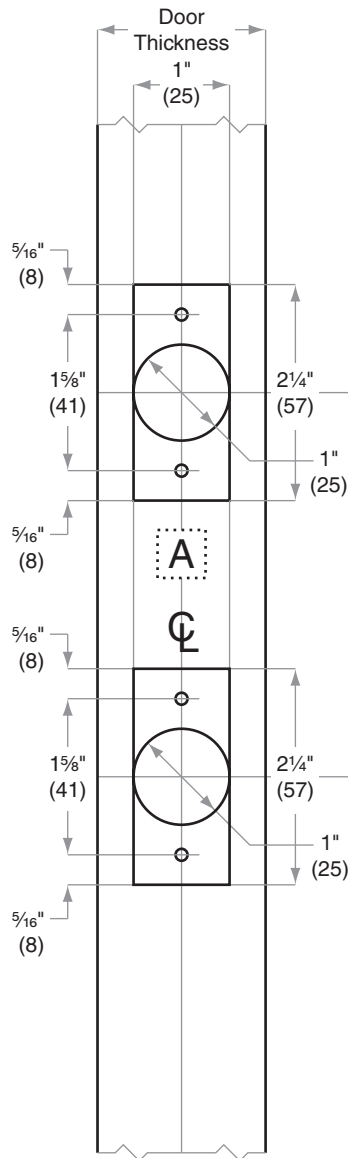
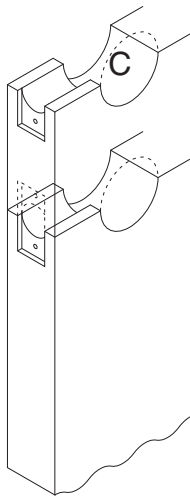
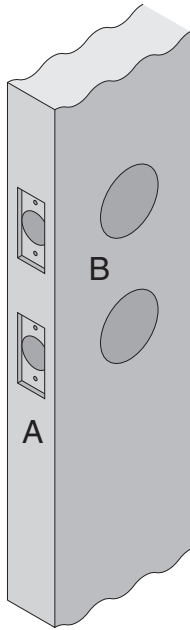
CS210

Door Type: Wood or Composite, Flat or Beveled

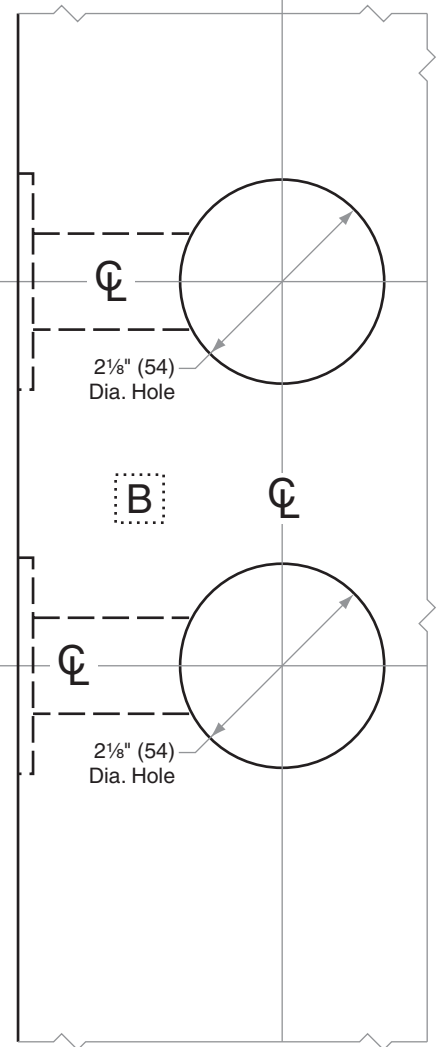
Door Thickness: 1 3/4" (44 mm)– 2" (51 mm)

Faceplate: Square Corner, 1" (25 mm) wide

Backsets: 2 3/4" (70 mm)



4" (102)
OR
5 1/2" (140)



Dimensions shown in parentheses () are in millimeters

Template is not to scale.

Job: _____

TEMPLATE

Date: _____

Door Thickness: _____

CS101

Remarks: _____

CS-Series

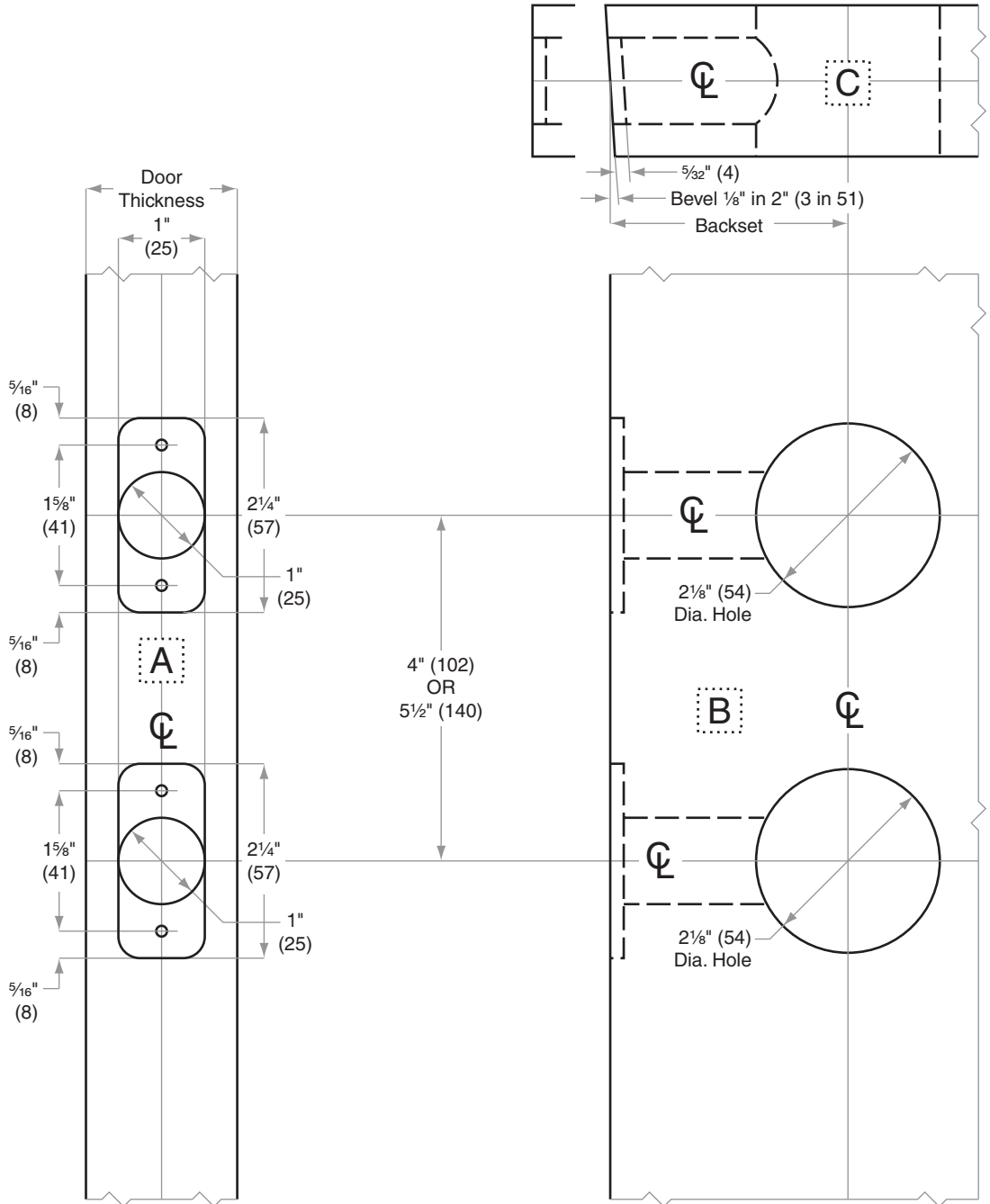
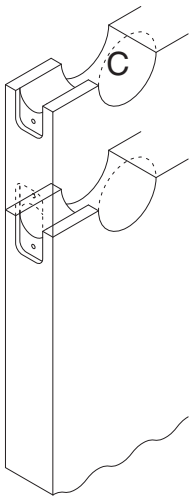
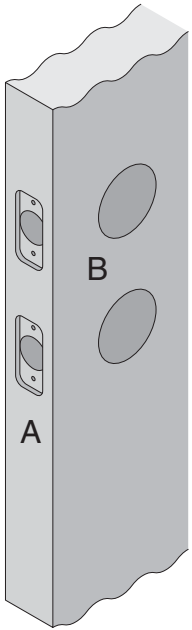
CS210

Door Type: Wood or Composite, Flat or Beveled

Door Thickness: 1 3/4" (44 mm) – 2" (51 mm)

Faceplate: Rounded Corner, 1" (25 mm) wide

Backsets: 2 3/4" (70 mm)



Dimensions shown in parentheses () are in millimeters

Template is not to scale.

Job: _____

TEMPLATE

Date: _____

Door Thickness: _____

CS102

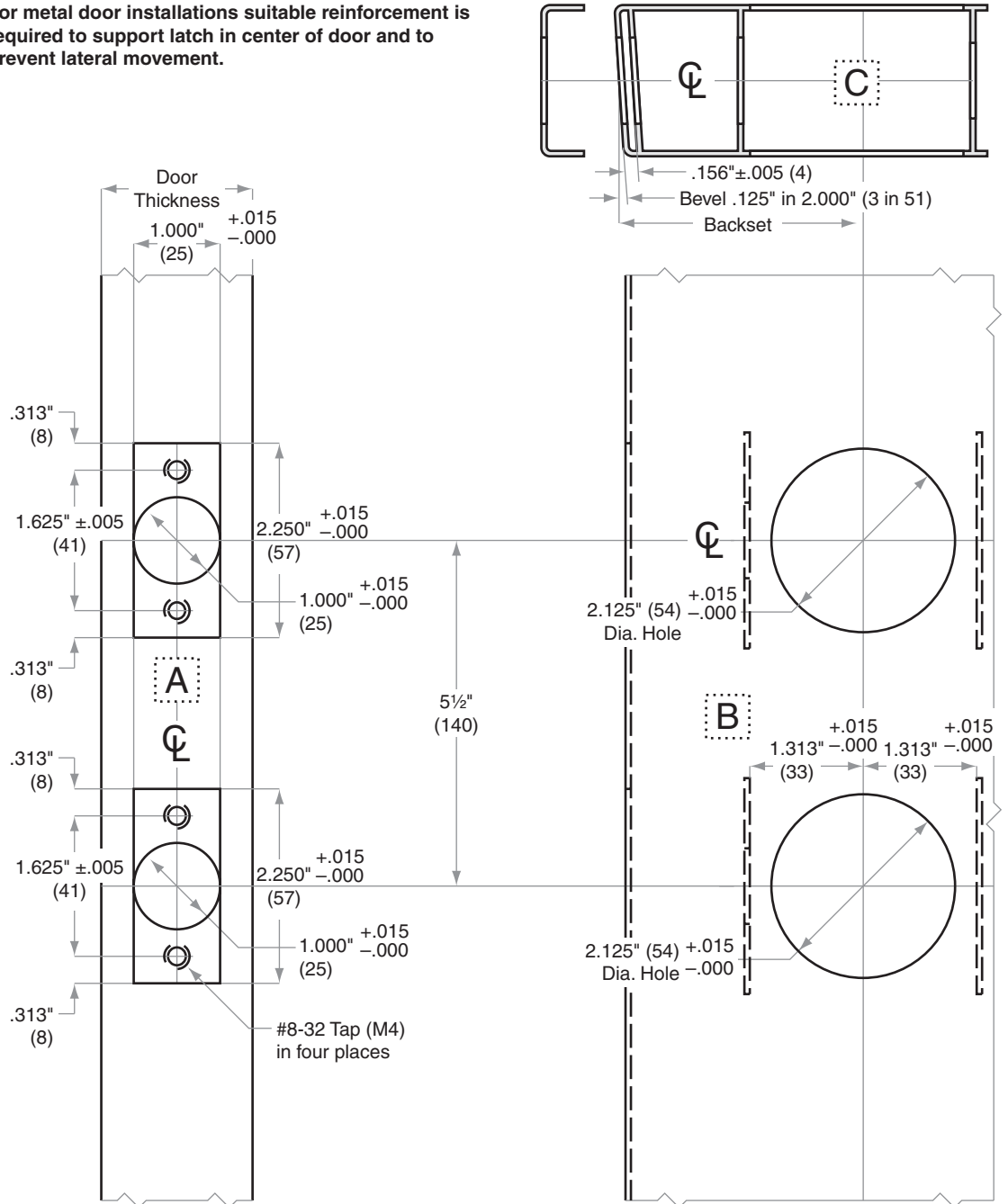
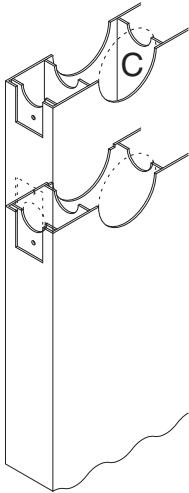
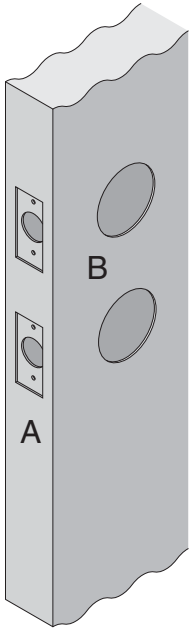
Remarks: _____

CS-Series

CS210

- Door Type:** Metal, Flat or Beveled
Door Thickness: 1¾" (44 mm) – 2" (51 mm)
Faceplate: Square Corner, 1" (25 mm)
Backsets: 2¾" (70 mm)

For metal door installations suitable reinforcement is required to support latch in center of door and to prevent lateral movement.



Dimensions shown in parentheses () are in millimeters

Template is not to scale.

Job: _____

TEMPLATE

Date: _____

Door Thickness: _____

CS103

Remarks: _____